

August 7, 2009

It Makes Sense!

❶

A Note from Dr. Lasmanis ~

We have a couple of very important schedule changes

1. **Morning drop off will begin at 7:55 AM.** With more car riders this year, there have been mornings where there was still a line at 8:15 AM, which is when students go to their classrooms for the start of the day. At the same time there is always a line of cars waiting before 8:00 AM. So, let's get them out of the cars and into the school!
2. **Early Release time change:** We are changing the early release time **from 1:00 PM to 1:35 PM.** We are making this change for a number of reasons; not the least of which is that with more 5th and 6th grade students, their lunch period is very rushed if we try to have them ready for dismissal at 1:00 PM.

The other major reason for the change is that we need the extra 35 minutes for instruction, which also allows us to count those days as full and not half days.

With this change the last day for students will also change. Instead of the 18th which was an early release day, **the last day for students will be a full day, June 17th.**

Back to School nights are next week. After a brief meeting in the gym you will go to your students classroom. This is a wonderful opportunity for families to find out just what their student's school day is like. We will also be handing out the 2009-10 Family Handbooks. I look forward to seeing you then.

A handwritten signature in black ink, appearing to read 'Dr. Lasmanis', written in a cursive style.

REMINDERS

NO School
next Friday,
August 14, 2009

SENSE Board of Directors Meeting
Mon., Aug. 10: 6:00 PM

Back To School Nights
6:00-7:00 PM

K-2— Tues. Aug. 11
3-6— Thurs., Aug. 13

PTO Meeting
Tuesday, Aug. 11:
5:30 PM

In This Issue...

- ❶ Note from Dr. Lasmanis
- ❷ BLUE FRIDAYS
- ❸ From the Front Office
- ❹ Community Corner

BLUE FRIDAYS

2



GO COLTS!

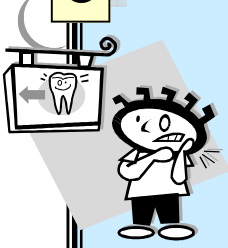
With the Colts' training camp under way , Friday, August 21 will be the first "BLUE Friday" of the football season.

That means that every Friday we can wear blue with or without Colts insignia, numbers, etc..

JC Lasmanis

FROM THE FRONT OFFICE....

3

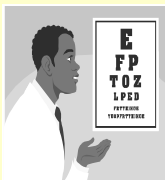


“SHINE YOUR SMILE DAY” IS COMING

We have invited Mobile Dentist/Smile Program to our school on **Thursday, August 20, 2009**, because good oral health is very important to our students' overall health and good health is essential for excellence in learning.

The Mobile Dentist team will set up a mini-dental office in our clinic and provide dental examinations, cleanings, fluoride treatments, sealants and check up x-rays. Only students who have returned their completed permission forms will be able to receive services from the Mobile Dentist. A permission/participation form was mailed to every family in their summer registration packet. If you did not receive a form, or have misplaced it, be sure to stop by the school office for a replacement. The forms must be completed and returned to your child's teacher by **no later than Wednesday, August 12, 2009.**

No child is ever turned away by Mobile Dentist/Smile Programs because of financial need. Mobile Dentist provides grants to families who require full financial assistance and subsidizes fees for those who need financial aid.



Vision & Hearing Screenings



On Monday, August 24 and Tuesday, August 25, 2009, during school hours, the Marion County Health Department (MCHD) nurses, through the Community-Based Care Program will be screening students for vision and hearing in grades 1, 3, and 4, and students new to SENSE who have transferred from schools located outside of Marion County.

Students in special education and students who failed a previous testing for whom there is no documented follow-up will also be tested.

Students suspected of having hearing problems and who are not already under medical supervision will be referred to the MCHD nurse and parents notified prior to screening date. After screening, a letter will be sent home confirming the results of the screenings.

Note: *No child shall be obligated to submit to any test or requirement provided for by this act whose parent or guardian objects to the same. Any such objections shall be made in writing, shall be signed by the parent or guardian of such child. (Reference- I.C.20-8.1-7-2)*

Safety is FIRST!

- Any parent and/or visitor entering the school building **MUST** always check in at the front office first.
- If your student arrives to school after 8:15 (late), an adult **MUST** enter the building and sign the student in at the office.

Transportation: *Just a friendly reminder that all transportation changes and arrangements should be made directly to the school office by **no later than 2:00 p.m. daily.***

4

COMMUNITY CORNER.....

(What's happening in our community?)

Community Corner – In this section of the newsletter, you will find out about great events happening in our community each week!

SENSE Uniform Exchange

August 11 and August 13

5-6pm

SENSE Cafeteria

Please bring old uniform pieces to exchange for new uniform pieces. For each uniform piece that is brought in, you will receive a ticket for a new uniform piece. Clothes that are brought in need to be clean and in a plastic bag. If you do not have any pieces to exchange, you may buy each uniform piece for \$2. All funds raised will go directly to the SENSE PTO to create programs for SENSE students and families.



Back to School Bash

Saturday, August 8th

10:00am-12:00pm

Immanuel Church of Christ – at the corner of East and Prospect Streets

K-6 students are welcome to join for a morning of fun and games. Wear your swimsuits and bring towels for water games, waffle ball, and other yard games. Lunch will be served and backpacks will be distributed to participants at the end. Call 631-2427 for more details.

